

## Ashcombe Road Wimbledon, SW19 8JP

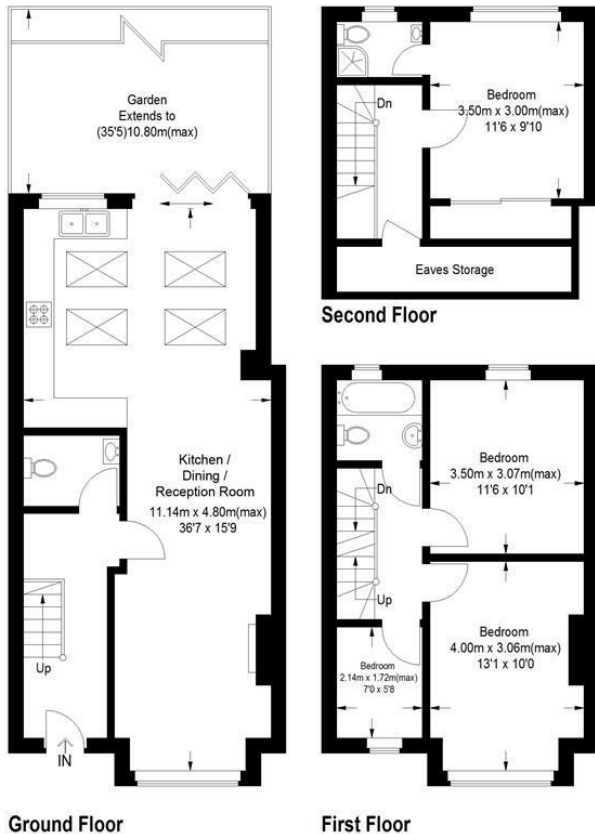
£975,000 Freehold



A well presented, four bedroom, two bathroom plus w/c, fully extended Victorian family home with a Westerly facing garden, located close to Wimbledon town centre and excellent local schools. Benefiting from a front living room and a bright open-planned kitchen/dining area with bi-fold doors that lead out to the sunny garden. Upstairs are two double bedrooms, a study and family bathroom whilst the large master bedroom with en-suite is located in the converted loft. The property also benefits from its close proximity to Leopold Road and its local shops and amenities, and is walking distance to both Wimbledon mainline, Haydons Road Thameslink and both Northern and District Line. Offered to the market with no onward chain, an early viewing is highly recommended.

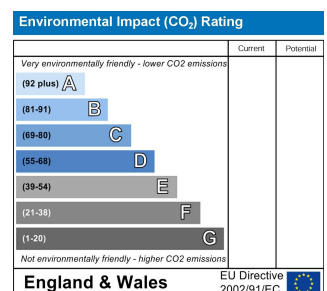
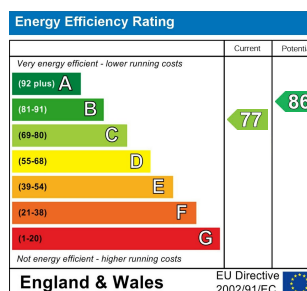
## Ashcombe Road, SW19

Approximate Gross Internal Area  
Total = 114.7 sq m / 1235 sq ft



This floor plan is for representation purposes only and is not drawn to scale. The Gross Internal Area includes outbuildings shown on the plan. Whilst every attempt has been made to ensure the accuracy of the plan measurements of doors, windows and rooms are approximate only and should be checked before making any decisions reliant upon them.  
Copyright Bespokeplans.co.uk (ID859354)

- Four Bedroom Victorian Family Home
- Westerly Facing Garden
- Open-Planned Bright Kitchen/Dining Area
- Downstairs Cloakroom
- Fully Extended
- Close to Numerous Transport Links and Local Amenities
- Close to Excellent Local Schools
- No Onward Chain
- EPC Rating C
- Council Tax Band F



For Free Mortgage Quote and Best Mortgage Rates, call an Ellisons Mortgage Advisor on 020 8944 9494



Although these particulars are believed to be correct, their accuracy is not guaranteed and they do not form part of any contract.

Celebrating 30 years of successful Sales and Lettings in Merton

